



WEATHERING WITH SALT

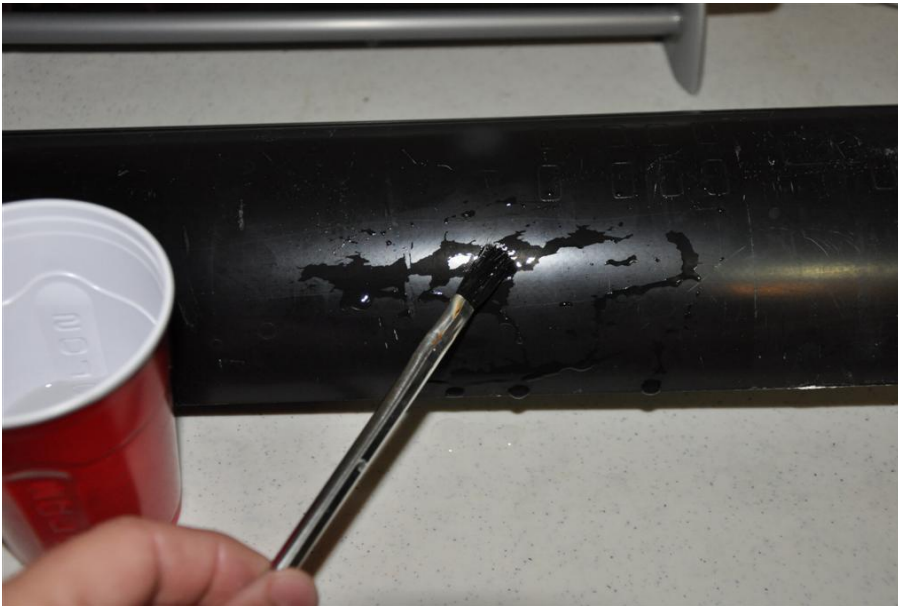
Step 1

Paint your base coat. This will be the color that you wish to show through the final coat. I will just be using the base color of this model for the article.



Step 2

With a brush, paint water onto the hull.



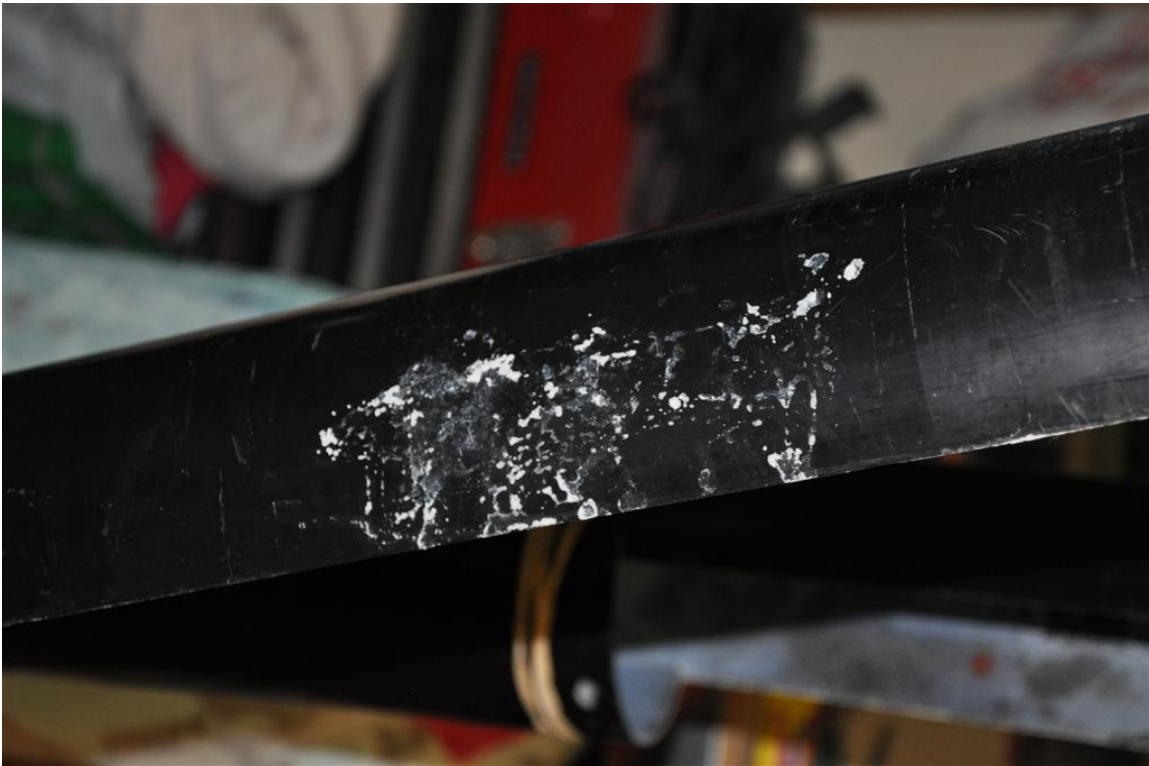
Step 3

While the boat is wet take a brush and dip it in table salt. Then stipple the hull in a random patten to give it a natural look. You can use different size salt grains to achieve different looks.



Step 4

Allow the salt and water to dry. If you feel you have put too much on brush some off. If you want more ad more. I used a blow dryer to speed up this process.



Step 5

Paint your final color and allow it to dry.



Step 6

Use a cloth or your had or brush... you get it, and wipe away the salt. It should look like the paint has flaked or faded away to the base coat.



Now I took this process to the next level and did it in 2 layers. Once with the red to black. I then did another layer of salt prior to spraying the light gray to make the paint look faded.



Now go use experiment with it!

Kevin Price